

A photograph of a live music performance at Mulcahy's. The scene is dimly lit with blue stage lighting. In the background, a band is performing on a stage. A large, colorful mural of a dragon's head is visible behind the band. Bright spotlights illuminate the stage. In the foreground, the silhouettes of a crowd of people are visible, looking towards the stage.

TECHNICAL INFORMATION



**3232 Railroad Ave
Wantagh, NY 11793
(516) 783-7500 | muls.com**

Talent Buyer Tim Murray
Talent Buyer
tmurray@mulcahys.com

Rick Cappiello
Stage manager
rcappiello@mulcahys.com

General Manager Allan Dorman
adorman@mulcahys.com

Event Production Mike Gaudiello
Sound Engineer
(929) 301-2973
mike.gaudiello@yahoo.com

Matthew Story
Light & Video Engineer
mstory@mulcahys.com

Box Office Ruby Staplehurst
Book Office Manager
ruby@mulcahys.com



GENERAL INFORMATION

CAPACITY

General Admission: 1,650

TICKETING

Box Office

*Main Address - Ramp on the corner of Railroad Ave
and Wantagh Ave - M-F 9:00am-6:00pm*

Mulcahy's Pub and Concert Hall Website

www.muls.com

Ticketweb

www.ticketweb.com/venue/mulcahy-s-pub-and-concert-hall-wantagh-ny/143764

MAIN ENTRANCE

3232 Railroad Ave, Wantagh NY 11793

We are located directly across from the Wantagh Station of the LIRR.

Our front doors serve as our entrance/exit to the public and consist of one set of double doors

WIFI/INTERNET

WiFi is available throughout the entire facility

Network name and password available upon request.

SHIPMENTS

Advance approval must be given for any and all shipments arriving prior to the date of your event.

All packages are subject to venue inspection upon arrival.

Please include Mulcahy's Pub and Concert Hall and the tour/event name on all shipments.

STAGE DIMENSIONS

Width: 36'

Depth: 14'*

Height: 5'

*Stage extensions available upon request

Mulcahy's Pub and Concert Hall's PA is a d&b audiotechnik installation specific A series. All amplification is d&b D series amplifiers designed for the installation. Being that the d&b (racks, delays, etc.) is an installation specific system, we cannot remove anything to accommodate visiting artists.

MAIN PA

| | | | |
|-----|-----|---------------------------------|---|
| 6 - | d&b | 10AL Installation Loudspeaker | 2 way Line Array :: (3) per side |
| 6 - | d&b | 10AL-D Installation Loudspeaker | 2 way Line Array with wide dispersion :: (3) per side |
| 4 - | d&b | 27A-SUB Cardioid Subwoofer | (2) per side located under the stage |

FOH Control

| | |
|-------------|---|
| FOH Console | Midas M32 :: (32) Channel Digital Console |
|-------------|---|

MONITORS

| | |
|-----|---------------------------|
| 6 - | RCF 12'' Powered Monitors |
| 1 - | Custom Built EAW Drum Sub |

MONITOR CONTROL

House monitor control is located stage right approximately above the stage with sight lines for all artists on stage. Touring audio is able to set up stage left on the floor in a stanchioned off area for all monitor mixing.

| | |
|-----------------|---------------------------|
| Monitor Console | Yamaha M7 :: (48) Channel |
|-----------------|---------------------------|

MIC PACKAGE

| | | | |
|-----|------------|------------|---------------------------|
| 4 - | Shure | QLXD2 SM58 | Wireless Dynamic Cardioid |
| 7 - | Shure | SM58 | Dynamic Cardioid |
| 4 - | Shure | SM57 | Dynamic Cardioid |
| 3 - | Shure | Beta 56 | Supercardioid |
| 5 - | Sennheiser | E904 | Dynamic Cardioid |
| 3 - | Sennheiser | E604 | Dynamic Cardioid |
| 2 - | Sennheiser | E906 | Supercardioid |
| 1 - | Shure | BETA 87C | Condenser |
| 1 - | Shure | BETA 52A | Supercardioid |
| 1 - | Shure | BETA 52 | Supercardioid |
| 3 - | Shure | SM81 | Condenser |
| 2 - | Samson | C02 | Condenser |
| 1 - | AKG | D112 | Supercardioid |



LIGHTING AND VIDEO

| | |
|---------------|--|
| House Console | Elation Onyx on PC Controlled by Elation Obsidian NX Wing (Rebranded Martin MPC) |
| 8 - | LED Color Kinetic 16s |
| 4 - | Chauvet 375z |
| 6 - | Generic Par 64s |
| 8 - | Elation Dartz 360 |
| 6 - | Elation SIXPAR100 |
| 4 - | Chauvet DJ Intimidator Spot 260 |
| 1 - | Martin 3000 DMX Strobe |

HOUSE POWER

3 Phase Power is located under the stage and is accessible to any visiting artists.

SPOTLIGHTS

ONE (1) Chauvet LED Followspot 120ST

Spotlight is located in the Perch with lighting and sound above the dance floor approximately 60ft from the stage.

ATMOSPHERE

ONE (1) High Volume Hazer

VIDEO

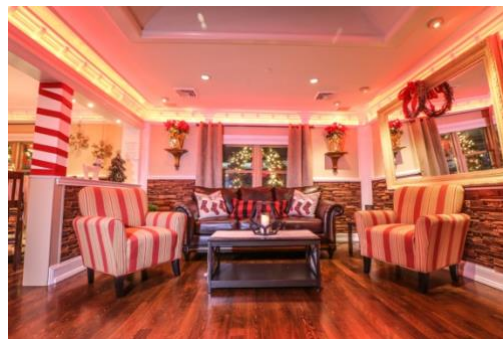
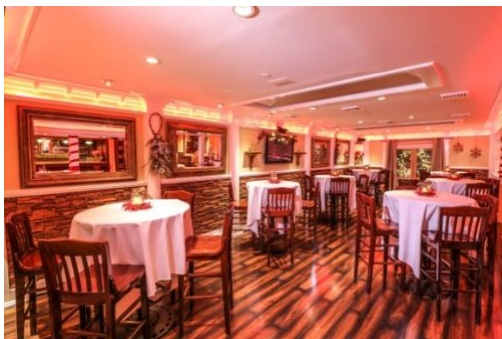
FIVE (5) Chauvet VIVID Panels controlled by ADJ VX4s Video Processor

1040x416p Resolution

16.45'W x 6.56'

George Francis Room

The greatest green room you will ever see, complete with a bar, two private bathrooms and a shower.



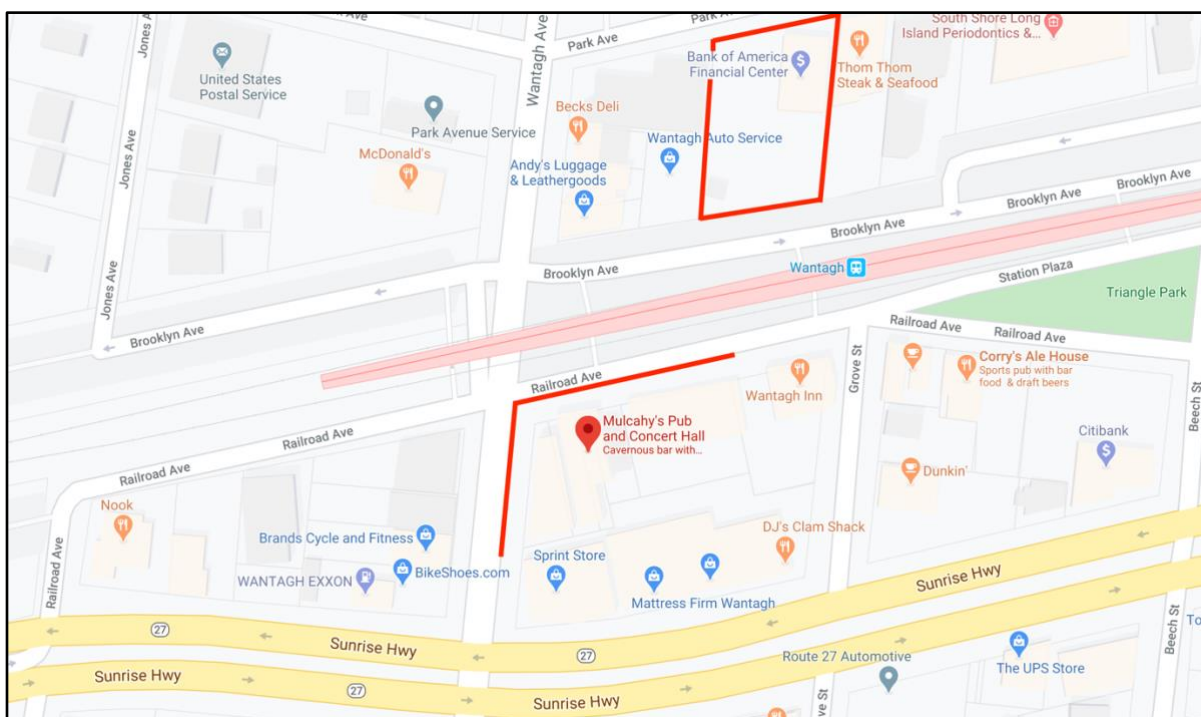
Heineken® Green Room

Heineken® sponsored lounge overlooking concert venue. Provides access to two bathrooms and a shower.



Parking Information

Parking for tour buses, trailers, act vehicles, etc. is available along Railroad Avenue and Wantagh Avenue adjacent to Mulcahy's Pub and Concert Hall. These areas are typically sectioned off with cones on the date of the event to accommodate the act. Additional parking for personal vehicles and guests is available at the Bank of America on Park Avenue (under a minute walk) after the bank closes for the day at 4:00 PM. See below for the aforementioned areas highlighted in red.



Load In Information

Load in is conducted through an exterior ramp at the corner of Railroad Avenue and Wantagh Avenue, followed by an interior ramp that leads to stage left. The typical schedule (can vary by act):

- 12:00 PM: Load In
- 4:00-6:00 PM: Sound Checks
- 7:00 PM: Doors
- 8:00-9:00 PM: Start of Show

